

FACULTY OF LAW, POLITICS AND SOCIAL SCIENCES (FSJPS)

Fact sheet - International Relations



SUMMARY

INTRODUCTION.....p.3

CONTACT

International Relations contacts.....p.4
Address.....p.4
Faculty’s website.....p.4
Website for incomers.....p.4

HOW TO APPLY ?

Language requirements.....p.5
Nomination deadlines.....p.5
Application deadlines.....p.5
Enrolment dates.....p.5
Documents required.....p.5
Visa.....p.5

HOW DO I CHOOSE MY COURSES ?

Conditions of course selection.....p.6
Courses catalogue.....p.6
French as foreign language.....p.6

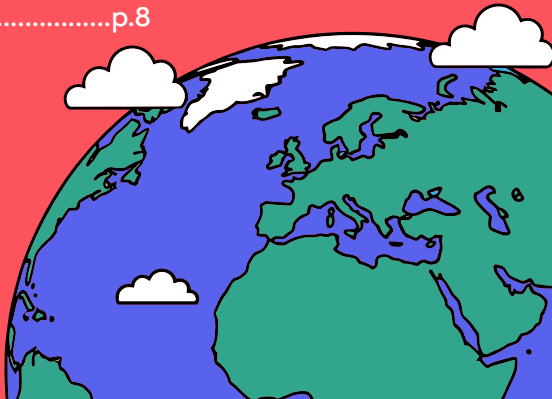
ACADEMIC CALENDAR.....p.7

THE UNIVERSITY OF LILLE SUPPORTS YOU

The Maison Internationale.....p.8
Education and disability.....p.8

YOUR DAILY LIFE IN LILLE

Housing.....p.9
Commuting & Travelling.....p.10
Student’s support Apps.....p.11



INTRODUCTION

Name of the Faculty

Faculty of Law, Political and Social Sciences - University of Lille

President of the University

Régis BORDET

Dean of the Faculty

Aymeric POTTEAU

Vice Dean for International Office

Marcel MORITZ

Erasmus code

F LILLE103

Fields of study

Law

ISCED Code 0420

Political Sciences and Civics

ISCED Code 0312

Economics

ISCED Code 0410

Website

www.univ-lille.fr

Faculty's website

www.droit.univ-lille.fr

The Faculty of Law, Political and Social Sciences welcomes nearly 9,000 students in a range of courses, from bachelor's degrees to doctorates (7 undergraduate programs, 4 professionalizing undergraduate programs, 41 Masters, 13 University Diplomas). The courses are taught by almost 200 teachers/researchers in 4 research laboratories and nearly 1,000 professional contributors recognized for their skills and experience.

This wide-ranging, specialized offer is conducive to professional integration, particularly through the development of apprenticeships. On 44,000 m² of premises, students attend lectures in 13 lecture theaters, 45 practical classrooms, 6 language laboratories, 3 teaching innovation rooms (including a trial simulation room). The teaching team implement multi-disciplinary and interactive teaching methods, including serious games, negotiation and trial simulations.

Last but not least, the Faculty encourages and supports hundreds of students in their international mobility projects, through its network of partner universities in Europe and beyond.

CONTACT

International Relations contacts

Heads of internationalization :

- Anne-Marie GORISSE
- Diederik WAGENAAR (spanish speaking countries)

Head of International Relations :

- Sophie SARR

Mobility Managers :

- Béatrice DEPOORTER
- Daryna GROMOVA

Apprentice :

- Clément RAMOS

E-mail address

- ri-droit@univ-lille.fr

Address

- Université de Lille – FSJPS
1 Place Déliot, 59000 Lille
Bâtiment C – 2ème étage – salle C.2.10

Faculty's website

- <https://droit.univ-lille.fr>

Website for incomers

- <https://droit.univ-lille.fr/relations-internationales/i-am-an-international-student-1>



HOW TO APPLY ?

Language requirements

- B2 in French recommended. Any Language test or certificate is accepted
- B2 in English Compulsory. Any Language test or certificate is accepted

Nomination deadlines

- 1st term : 30th April
- 2nd term : 20th October

Your university must send the nomination of the selected students at ri-droit@univ-lille.fr with the name, surname, date of birth, specialities (ISCED code if applicable), duration of the mobility and e-mail address.

Application deadlines

- 1st term : 10th May 2026
- 2nd term : 1st November 2025

You must fill in your application form **ONLY** after having received the e-mail from the international office, and you must use your personal e-mail address, rather than your student university e-mail address.

Enrolment dates

- 1st term – from end of May to early June
- 2nd term – First week of December

Documents required

- Passport or Identity document
- Identity photo
- Cover letter
- Curriculum Vitae
- Learning agreement signed by you and your institution
- Language certificate
- Academic transcript of records
- European health insurance card of provisional certificate

Visa

If you are a non-European student, as soon as we send you the letter of acceptance, you must start the visa application procedure. We advise you to apply to a Student long stay visa.

A minimum financial guarantee will be requested by the embassy (615€ / month)

Once in France, students will have to validate the visa (50€)

For further information about the request procedure for each country are available onto : <https://france-visas.gouv.fr/>

HOW DO I CHOOSE MY COURSES ?

Conditions of course selection

Any student nominated to our faculty is authorised to select their courses in our three specialities:

→ Law

→ Political Science

→ Economics

You can choose your courses from different levels, from 1st year undergraduate to 1st year Master. The number of credits recommended is 30 ECTS per semester, making 60 ECTS per year. Depending on your institution, you may need to validate more or less credits.

Please note that some master's level courses are limited to 5 places.

Course Catalogue

You can find the catalogue under the « Enroll in an exchange program » section of this link:

→ <https://droit.univ-lille.fr/relations-internationales/i-am-an-international-student-1>

Every undergraduate lecture is worth 5 ECTS, and 8 ECTS for Master lectures.

French as foreign language

Two sessions are available:

→ Intensive session 20
hours of lectures spread over a week (the first week of each semester).
There are no ECTS for this session.

→ Throughout the year 24
hours of lesson per semester. There are 3 ECTS for each semester for this session

Both sessions will be subject to a placement test, and the lectures will be given at the « Pont de Bois » Campus

For more details you can send an e-mail to defi@univ-lille.fr



ACADEMIC CALENDAR

FIRST / FALL SEMESTER

.....
Welcome day

5th September 2025
.....

Start of courses

8th September 2025
.....

End of courses

Second week of January
.....

Exam period

*15th December - 19th December 2025
/ 5th January - 10th January 2026*
.....

Resit exams

10th June – 30th June 2026
.....

SECOND/SPRING SEMESTER

.....
Welcome day

9th January 2026
.....

Start of courses

12th January 2026
.....

End of courses

11th April 2026
.....

Exam period

27th April 2026 - 9th May 2026
.....

Resit exams

10th June – 30th June 2026
.....



THE UNIVERSITY OF LILLE SUPPORTS YOU

The Maison Internationale

The “Maison Internationale” helps our students in the integration of their new environment: having a visa, opening a bank account etc. They organize activities every month, which will be communicated to every student at the beginning of every month. They also organize events every weekend.

Website

→ <https://international.univ-lille.fr/maison-internationale/>

E-mail address

→ maison-internationale@univ-lille.fr

Address

→ Bâtiment A4 – Cité Scientifique
59650 Villeneuve d'Ascq

Education and Special Needs

The University of Lille is heavily invested and involved in welcoming and supporting students with special needs, a policy that is based on making adaptations and personalised changes to meet the needs of each individual case. For more information, please contact :

→ incoming-specialneeds@univ-lille.fr



YOUR DAILY LIFE IN LILLE

Housing

→ Student Housing CROUS

International students in an exchange program can ask for an accommodation in student housing. There is a fixed number of rooms specifically for international students. The request is made at the time of your application on our portal.

→ Links towards private sector accommodations :

- <https://www.studapart.com/fr>
- <https://www.twenty-campus.com/fr/villes/lille/>
- <https://student-place.com/>

- <https://www.nexity-studea.com/locations-etudiantes/lille>
- <https://livin-france.com/fr>

For more details you can send an e-mail to exchange-helpdesk@univ-lille.fr

→ Hostel

It is a temporary solution, during your search for a definitive housing. (Auberge Stéphane Hessel / Eklo Hotel 25€/ night)

It is important you have a guarantor to find housing in Lille. There are multiple services that act as such, like Cautioneo, Garantme, Studapart.



Commuting & Travelling

Lille is a welcoming and touristic city with a rich cultural life. Thanks to its ideal location, you can reach Paris, Brussels, or even London in less than an hour by train. Living in Lille means enjoying a vibrant city with some of Europe's greatest capitals within easy reach.

→ SNCF

It is the French public railway company : <https://www.sncf-connect.com/>

→ Ilevia

Transport service in Lille and its surroundings. If you stay for several months, we advise you to buy a season ticket (with which you can take the subway, train, bike and bus). There is an office at the Subway stations « Lille Flandres » and « République Beaux-Arts », or their website <https://www.ilevia.fr/>



Erasmus place

It is an association whose main mission is to create an inclusive and dynamic community. They often organize trips and events :

www.erasmusplace.com

Student's support Apps



→ ULillGo - <https://ulillgo.univ-lille.fr/#/>

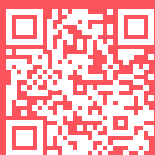
Download our application for students ULillGo to get advice about your arrival and other useful information.



→ ULillExplore - <https://ulillexplore.univ-lille.fr/#/signin>

Download our application ULillExplore to get a local buddy during your stay in Lille.





Linktree

Faculty of Law, Political and Social Sciences
1, place Déliot – CS 10629
59024 Lille Cedex – France
Phone number : +33 (0)3 20 90 74 00